

# FREQUENTLY ASKED QUESTIONS

## Academics

### 1 ARE YOUR TEACHERS CERTIFIED?

Our Crusader teaching staff is 100% certified through the state of Louisiana. We not only have certified teachers, but we are proud of the qualifications of our teachers. 56% of our staff hold an advanced degree.

A number of private schools have a reputation for hiring non-qualified teaching staff. Claiborne Christian has a rigorous hiring process that challenges prospective teachers ensuring that they have the qualifications, skills, and character to lead our students.

### 2 WHAT CURRICULUM DO YOU USE?

We use a variety of curriculum materials to offer each student the greatest opportunity for success. A complete list of curriculum is outlined in the notes section at the end of this guide.

The curriculum selection process focuses on alignment with our school vision. The quality of the content itself and the overall approach of the text are also considered when making any curriculum decisions. This process has led us to utilize a variety of publishers including Christian publishers like A Beka, AIG, BJU Press, and Summit Ministries as well as leading textbook publishers including McGraw-Hill, Saxon, Gibbs-Smith, Prentice, Scott Foresman, McDougal Littell, Holt, Rinehart, & Winston, and Glencoe.

Our dual enrollment courses utilize the textbooks required by the college institutions offering the college credit. Students are currently able to earn dual credits for on-campus Spanish I & II and Psychology 101 & 102 courses and for various online courses.

Claiborne

1

Christian

# FREQUENTLY ASKED QUESTIONS

## Academics

### 3 HOW DO YOUR STUDENTS PERFORM ACADEMICALLY?

#### STANDARDIZED TESTING

We believe it is important to show our families the quality education they are receiving at CCS. Claiborne Christian participates in a number of state administered tests, and, in recent years, our students have scored significantly higher than local and state averages in nearly all categories. In elementary and middle school math and English, CCS also utilizes a unique research-based testing program that allows teachers to pinpoint individual student areas of both growth and struggle. High school End-of-Course (EOC) test results have also testified to the academic strength of CCS and the college readiness of our students.

#### ACT AVERAGES

A firm commitment has been placed on preparing our students for college and the ACT, and our efforts have resulted in higher ACT averages. Our 2015 graduating class had an average ACT score of 23.3, which is 21% higher than the state average and 10% higher than the national average. We are proud of our teachers and students and the results of their hard work.

Claiborne

2

Christian

# FREQUENTLY ASKED QUESTIONS

## Academics

3

CONTINUED...

### LITERARY RALLY

Our high school students have had great success at district and state literary rally, competing against area students in all of our academic areas. In our most recent competitions, 40% of our district representatives placed and qualified for state rally. 62% of those students went on to place at state rally.

### OTHER ACADEMIC COMPETITIONS

We believe that creating an environment of academic excellence and healthy competition is critical to challenging our students to reach their full potential. Some of the tools and programs we use to encourage that are: the annual middle school spelling bee, high school state math competitions, quiz bowl team, and the WordWright challenge. We strive to find fun ways to celebrate students from K5-12th grade for their commitment to continually growing and developing academically.

Claiborne

3

Christian

# FREQUENTLY ASKED QUESTIONS

## Academics

4

### ARE YOUR STUDENTS PREPARED FOR SUCCESS IN COLLEGE?

Our students receive all of the necessary courses required to earn Louisiana's TOPS scholarship and a State of Louisiana diploma. The rigorous academic environment created in our classrooms prepares students for success in college programs. This preparation has also led to ACT averages that have increased year after year and are currently at record highs.

In the last five years, students have graduated from CCS and gone on to attend Louisiana universities including LSU, ULM, Louisiana Tech, Centenary, and Northwestern. Students have also attended prominent Christian universities in California, Texas, and Tennessee.

CCS graduates tight knit and smaller graduating classes that are continually offered hundreds of thousands of dollars in scholarships. The 2015 class total was over \$600,000 in scholarships awarded to CCS students.

Claiborne

4

Christian

# FREQUENTLY ASKED QUESTIONS

## Academics

### 5 DO YOU HAVE SPECIAL EDUCATION PROGRAMS?

We desire to offer special education services in the future, but at this time we are unable to fund a special education program at CCS. Our commitment is to help students that need these special services that we do not offer to find an alternative program that is a fit for them.

We do have programs that assist students struggling in certain core areas including math and English. Our elementary eSpark iPad program seeks to offer individual learning and growth for students struggling with specific concepts or areas of study.

This eSpark program is also used to challenge and stretch our higher performing students to continue growing. The teachers at CCS are also encouraged and seek to challenge students needing increased challenges in specific content areas or skills.

# FREQUENTLY ASKED QUESTIONS

## Student Experience

6

### WHAT EXTRACURRICULAR ACTIVITIES ARE OFFERED?

The Crusader athletic program offers several opportunities for students to get involved and to build relationships with their peers.

High school and middle school students may participate in cross country, basketball, softball, baseball, cheerleading, and tennis. These programs have a rich history of success and offer unparalleled opportunities to create friendships, develop character, and to utilize student's physical abilities. (Elementary students are also eligible to participate in cross country.)

The Family Church School of Arts program is also utilized by many of our elementary families to allow students to pursue different interests. Students may sign up to participate in dance, jiu jitsu, gymnastics, and private voice lessons that are facilitated by the School of Arts program. For more information on these classes and the specific times, cost, and experience, contact the school Arts Program through the front office at 396-7968 ext. 3607.

The TOT (Teams of Tomorrow) program also visits the campus on several afternoons after school to offer basketball fundamentals training to children from 3 years of age to 5th grade. For more information on these classes and the specific times, cost, and experience, contact Cassie Walker at 348-0768.

Claiborne

6

Christian

# FREQUENTLY ASKED QUESTIONS

## 7 WHAT CO-CURRICULARS ARE AVAILABLE?

The co-curricular opportunities available to Crusader students celebrate their giftings, equip them with leadership skills, and allow them opportunities to serve.

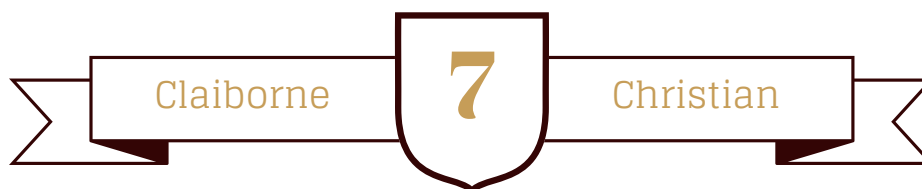
Curricular and co-curricular arts opportunities include choir, art, computer, and library. Students participate in each of these on a weekly basis along with physical education.

Middle and high school students may audition for our award-winning choir program. These students are also able to audition for our state's honor choir. A number of our students have received state and national honor choir invitations. The Crusader choir has consistently won superior ratings at the Southern Choral Classic Festival choir competition.

## 8 WHAT IS EXPECTED OF STUDENTS AND FAMILIES IN TERMS OF RELIGION?

Claiborne Christian is a covenant-based school with regard to our enrollment practices. This means that we partner with families that are professing and committed Christians. Families are required to sign documentation ensuring agreement with Claiborne Christian School's statement of beliefs, which is aligned directly with the Bible, not any particular denomination.

A Student entering the school in elementary or middle school grades must have a parent that is a professing Christian. A student entering in high school must be a Christian believer who has professed Jesus Christ as his or her Lord and Savior. We do not require a student or family to attend a specific church. Our teachers, coaches, and students attend a variety of churches across the region.



# FREQUENTLY ASKED QUESTIONS

## 9 IS CLAIBORNE CHRISTIAN ALIGNED WITH A SPECIFIC DENOMINATION?

Claiborne Christian school is not directly associated with a denomination. Our sponsoring church, Family Church, is a member of the Church of God in Cleveland, TN. We are intentional about creating an atmosphere that is welcoming to students from a wide variety of Christian denominations.

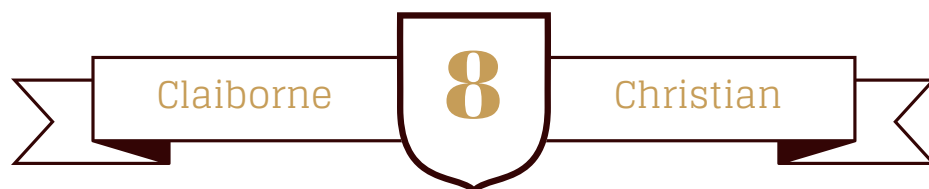
Many of our families attend Family Church, but this percentage is less than 50% of our total student body.

## 10 WHAT IS TAUGHT IN BIBLE CLASSES AND CHAPEL?

Our Bible classes and chapels focus on the redemptive story of the Bible. The curriculum intentionally walks students through the Bible teaching them the key principles, stories, and truths that make it God's word to us.

**Our focus is on helping students to do the following:**

- Understand who God is and His plan for the world
- Clearly explain the truth of the Gospel and Jesus Christ
- Embrace a saving relationship with Jesus Christ
- See all of their world through the lens of the Bible and Jesus Christ
- Understand how their life's work can bring glory to God
- Develop, nurture, and apply a Biblical worldview to all areas of life





# FREQUENTLY ASKED QUESTIONS

## Tuition & Fees

11

**WHAT IS THE FINANCIAL INVESTMENT FOR MY CHILD TO ATTEND CLAIBORNE CHRISTIAN SCHOOL?**

Sending your child to Claiborne Christian School is an investment in your child's future. This investment will bring both short and long term benefits. At CCS your child will be seen as an individual, one who has something significant to offer to others in our community. He will be loved, accepted, and valued. He will be challenged to stretch and grow in his abilities to think, communicate, and produce works of excellence. He will be prepared for college and career and be equipped to meet the demands of life. Parents choosing to enroll their child in our school are investing in the foundation of their greatest treasure, their child.

**A complete listing of our tuition and fees is listed on the Tuition & Fees document in your enrollment packet.**

### **Tuition: (Per Child by Grade)**

**K-5 Grade \$5189.84**

**6-8 Grade \$5502.33**

**9-12 Grade \$5877.22**

**Tuition is charged 11 months(July-May) and due one the 1st of every month. A \$35 late fee will be assessed after the 10th. All fees and tuition are non-refundable. Students enrolling after the start of the year will be charged on a prorated basis. For questions contact Alison Walker 318.396.7968 Ext. 3202**

Claiborne

9

Christian

# FREQUENTLY ASKED QUESTIONS

## Tuition & Fees

### Registration Fee:

Family 300.00

Individual 200.00

After-school Care 25.00

### Books and Technology Fee:

K-12 grade 400.00 (includes one Key Fob)

### School Supplies Fee:

Kindergarten 65.00

1-5 grade 40.00

Graduation Fee: 12th grade 150.00

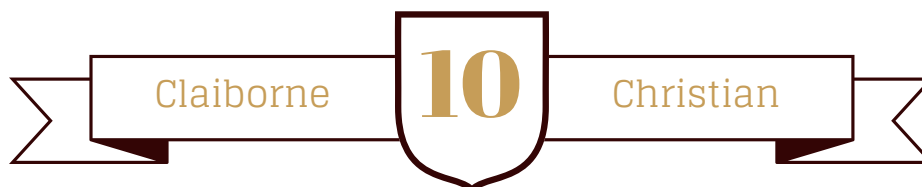
Enrichment Fee: K-5 grade 25.00

Yearbook Fee: Individual 50.00

After-School Care: Number of Children 125.00 per month

Provided after school until 6:00pm during days the school is open.

For questions concerning your monthly statement, contact Alison Walker  
318.396.7968 Ext. 3202.



# FREQUENTLY ASKED QUESTIONS

## Curriculum Guide

### ELEMENTARY CURRICULUM

- ELA- Scott Foresman and ABEKA
- Mathematics- Saxon
- Social Studies- ABEKA
- Bible- Summit Ministries
- Science- ABEKA

### MIDDLE SCHOOL CURRICULUM

- ELA- McDougal Littell & Holt, Rinehart, Winston
- Mathematics- Glencoe
- History- 6th grade - ABEKA/ 7th grade - Gibbs Smith/ 8th grade - Prentice
- Bible- 6th grade - Summit Ministries/ 7th grade - Lifeway/ 8th grade Summit Ministries
- Science- BJU Press

### HIGH SCHOOL CURRICULUM

ELA- Prentice Hall

Mathematics- 9th grade Glencoe/ 10th Saxon/ 11th grade Algebra- Glencoe & Geometry - Saxon/ 12th grade Saxon

History- Prentice Hall

Bible- Summit Ministries, CCS created curriculum

Science- 9th grade ABEKA/ 10th Grade Houghton Mifflin/ 11th grade ABEKA/ 12th grade Prentice Hall

Claiborne

11

Christian